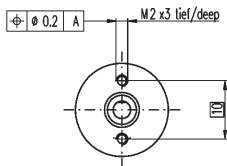
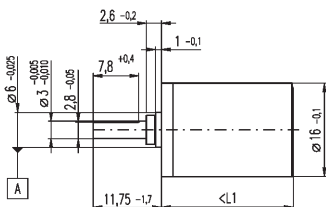


Ø16mm

## Gearheads: DC Motors & Gearbox Combinations

0.1 - 0.3 NM



### Notes:

16mm planetary gearhead, supplied with fixing kit to suit motors opposite.  
Pinion supplied loose for fixing to motor shaft using Loctite 603.

**Maximum Axial Load:** 8N    **Maximum Radial Load at 6mm from Flange:**  
2 Stage = 15N , 5 Stage = 20N.

**Operating Temperature Range:** -15°C to +100°C

**Mass:** 23-35g.

### DISCOUNTS

|        |            |
|--------|------------|
| 1 - 5  | List Price |
| 6 - 19 | -8%        |
| 20 +   | -14%       |

| PART NUMBER  | Ratio  | No. of Stages | Length L | Cont. Torque (Nm) | Peak Torque (Nm) | Max Speed | Eff. | Average Backlash | Price Each 1-5 |
|--------------|--------|---------------|----------|-------------------|------------------|-----------|------|------------------|----------------|
| HPCMAX110322 | 19:1   | 2             | 19.1     | 0.15              | 0.225            | 8000      | 81%  | 1.6°             | £68.80         |
| HPCMAX110323 | 84:1   | 3             | 22.7     | 0.20              | 0.300            | 8000      | 73%  | 2.0°             | £80.48         |
| HPCMAX110324 | 370:1  | 4             | 26.3     | 0.25              | 0.375            | 8000      | 65%  | 2.4°             | £91.20         |
| HPCMAX110325 | 1621:1 | 5             | 29.9     | 0.30              | 0.450            | 8000      | 59%  | 3.0°             | £101.92        |

