

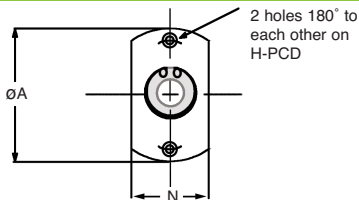
# Shafts & Bearings

## Single Housed Bearing Assembly (Double Flat)

HPCBH02 - With Circlip Retainer



Double Flat



With Circlip Retainer : 3 - 30mm Bores

For fixing, use H holes for a capscrew fixing, or alternatively the THD tapped hole can be used to introduce a fastener from the opposite direction.

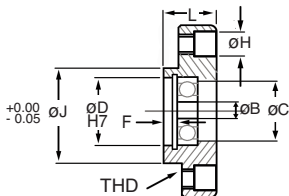
PART NUMBER	ØB	ØD	ØC	L	ØA	ØJ	H
HPCBH0201-40-623	3	Ø10x7Dp	Ø8.5	11	40	Ø22x3	Ø7.5x4.5Dp (M4 Capscrew)
HPCBH0201-40-634	4	Ø16x8Dp	Ø14.0	11	40	Ø22x3	Ø7.5x4.5Dp (M4 Capscrew)
HPCBH0201-40-625	5	Ø16x8Dp	Ø14.0	11	40	Ø22x3	Ø7.5x4.5Dp (M4 Capscrew)
HPCBH0201-40-606	6	Ø17x9Dp	Ø15.0	11	40	Ø22x3	Ø7.5x4.5Dp (M4 Capscrew)
HPCBH0201-58-608	8	Ø22x11Dp	Ø19.5	16	58	Ø36x4	Ø9.5x5.5Dp (M5 Capscrew)
HPCBH0201-58-6000	10	Ø26x12Dp	Ø24.0	16	58	Ø36x4	Ø9.5x5.5Dp (M5 Capscrew)
HPCBH0201-58-6201	12	Ø32x14Dp	Ø28.0	16	58	Ø36x4	Ø9.5x5.5Dp (M5 Capscrew)
HPCBH0201-94-6202	15	Ø35x18Dp	Ø33.0	25	94	Ø66x6	Ø15.0x8.5Dp (M8 Capscrew)
HPCBH0201-94-6003	17	Ø35x17Dp	Ø33.0	25	94	Ø66x6	Ø15.0x8.5Dp (M8 Capscrew)
HPCBH0201-94-6004	20	Ø42x19Dp	Ø38.0	25	94	Ø66x6	Ø15.0x8.5Dp (M8 Capscrew)
HPCBH0201-94-6005	25	Ø47x19Dp	Ø43.0	25	94	Ø66x6	Ø15.0x8.5Dp (M8 Capscrew)
HPCBH0201-94-6006	30	Ø55x20Dp	Ø50.0	25	94	Ø66x6	Ø15.0x8.5Dp (M8 Capscrew)



# Shafts & Bearings

## Single Housed Bearing Assembly (Double Flat)

HPCBH02 - With Circlip Retainer



Chamfered on all external corners

DISCOUNTS	1 - 5	6-19	20-39	40-59	60-99	100 +
List Price		-5%	-10%	-15%	-20%	-30%

PART NUMBER	H-PCD	THD	Bearing XX in Assembly	N	F	PRICE EACH 1-5
HPCBH0201-40-623	30	Ø4.20 (M5)	623zz 3x10x4	24	3	£27.83
HPCBH0201-40-634	30	Ø4.20 (M5)	634zz 4x16x5	24	3	£27.83
HPCBH0201-40-625	30	Ø4.20 (M5)	625zz 5x16x5	24	3	£27.83
HPCBH0201-40-606	30	Ø4.20 (M5)	606zz 6x17x6	24	3	£27.83
HPCBH0201-58-608	46	Ø5.20 (M6)	608zz 8x22x7	40	4	£34.54
HPCBH0201-58-6000	46	Ø5.20 (M6)	6000zz 10x26x8	40	4	£34.54
HPCBH0201-58-6201	46	Ø5.20 (M6)	6201zz 12x32x10	40	4	£34.54
HPCBH0201-94-6202	78	Ø8.50 (M10)	6202zz 15x35x11	67	7	£54.82
HPCBH0201-94-6003	78	Ø8.50 (M10)	6003zz 17x35x10	67	7	£54.82
HPCBH0201-94-6004	78	Ø8.50 (M10)	6004zz 20x42x12	67	7	£54.82
HPCBH0201-94-6005	78	Ø8.50 (M10)	6005zz 25x47x12	67	7	£54.82
HPCBH0201-94-6006	78	Ø8.50 (M10)	6006zz 30x55x13	67	7	£54.82

Unit 14, Foxwood Industrial Park, Foxwood Rd. Chesterfield, Derbyshire S41 9RN

Telephone +44(0)1246 268080 Fax +44(0)1246 260003



4.77

Shafts & Bearings Single Housed Bearing Assembly