

Couplings

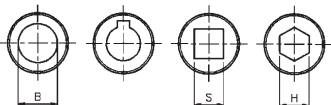
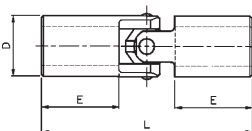
Single Universal Joints

Material
Steel & Stainless Steel



DISCOUNTS

| | |
|-------|------------|
| 1 - 9 | List Price |
| 10-24 | -2% |
| 25-49 | -4% |
| 50 + | -6% |



* All bores supplied solid (unbored as standard).

Couplings Universal Joints

| PART NUMBER | | D | L | E Min | * B | 'B' Max | | | | | PRICE EACH 1-5 | |
|-------------|-----------|----|-----|----------|--------|---------|----|----|----|------|----------------|-----------|
| Steel | Stainless | | | | | MB | WK | S | H | SBT | Steel | Stainless |
| HPCME16 | HPCSME16 | 16 | 58 | 19 | 8 | 10 | 8 | - | - | 45 | £56.58 | £128.43 |
| HPCME20 | HPCSME20 | 20 | 64 | 19 | 10 | 13 | 11 | 10 | 10 | 88 | £57.40 | £140.63 |
| HPCME25 | HPCSME25 | 25 | 86 | 26 | 12 | 16 | 14 | 12 | 12 | 180 | £62.17 | £149.82 |
| HPCME32 | HPCSME32 | 32 | 95 | 28 | 16 | 22 | 18 | 16 | 16 | 405 | £76.49 | £180.46 |
| HPCME40 | HPCSME40 | 40 | 108 | 30 | 20 | 25 | 22 | 19 | 19 | 860 | £91.81 | £235.50 |
| HPCME45 | HPCSME45 | 45 | 127 | 36 | 20 | 30 | 25 | 22 | 22 | 1250 | £180.00 | £302.74 |
| HPCME50 | HPCSME50 | 50 | 140 | 41 | 25 | 35 | 30 | 25 | 25 | 1730 | £210.00 | £394.55 |
| HPCME63 | HPCSME63 | 63 | 178 | 52 | 32 | 45 | 35 | 32 | 32 | 3400 | £259.19 | £556.49 |

B : Standard round bore available to order,
if required please add an additional £15.00 per end

MB : Max round bore available

WK : Max round bore available with keyway, please contact sales for a quote

S : Max square bore available, please contact sales for a quote

H : Max hexagon bore available, please contact sales for a quote

SBT: Static Breaking Torque (Nm)

3.86



Unit 14, Foxwood Industrial Park, Foxwood Rd. Chesterfield, Derbyshire S41 9RN

Telephone +44(0)1246 268080 Fax +44(0)1246 260003