

# Couplings

Material

## 6-Beam (Non-Relieved)

Acetal

Couplings 6-Beam (Non-Relieved)



### Materials & Finishes

**Couplings:** Acetal (natural)

**Fasteners:** Stainless Steel

### General description

General purpose single piece couplings.

6 Beam couplings are available in three standard materials: Stainless Steel, Aluminium and Acetal.

### Where to use

Stepper and servo drives, encoders, general purpose light duty power transmission applications.

### Speeds

Up to 5000 rpm in standard form.

### Peak torque largest size

4.0 Nm

### Temperature range

-20°C to +60°C

### Electrically isolating

Aluminium	}	No
Stainless Steel		
Acetal		

### Connection

Clamp or Set Screw

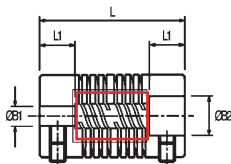
### Standard Bores

Bore Size Coupling Size	ØB1, ØB2 + 0.03 / - 0 mm												
	2	3	3.175	4	4.763	5	6	6.350	8	9.525	10	12	12.7
13		●	●	●	●	●	●						
16		●	●	●	●	●	●	●	●				
19					●	●	●	●	●	●			
25						●	●	●	●	●	●	●	
32									●	●	●	●	●
Bore ref.	11	14	16	18	19	20	22	24	28	31	32	35	36

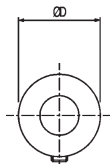
● B1 only

● B1 & B2

### Set screw hubs

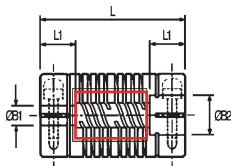


Ref. HPC710 6-Beam Non-Relieved

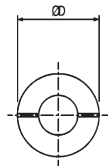


Typical

### Clamp hubs



Ref. HPC711 6-Beam Non-Relieved



Typical

Bore Size	ØB1, ØB2 + 0.03 / - 0 mm													
	14	15.88	16	18	19	19.05	20	24	25	25.4	28	30	31.75	32
13														
16														
19														
25														
32	●	●	●											
<b>Bore ref.</b>	38	41	42	45	46	47	48	51	52	53	54	56	57	58

# Couplings

Material

## 6-Beam (Non-Relieved)

Acetal

### Dimensions & Order Codes

PART NUMBER		Coupling Type & Size	ØD	L	L1	Bore Diameters		
Set Screw Style	Clamp Style					Min B1	Min B2	Max B1 & B2
HPC710.13.----	-	13	12.7	22.9	6.5	3.0	5.0	6.0
-	HPC711.13.----							
HPC710.16.----	-	16	15.9	25.4	6.5	3.0	6.0	8.0
-	HPC711.16.----							
HPC710.19.----	-	19	19.1	26.5	6.5	4.0	6.35	9.53
-	HPC711.19.----							
HPC710.25.----	-	25	25.4	38.1	11.0	5.0	8.0	12.0
-	HPC711.25.----							
HPC710.32.----	-	32	31.8	57.2	16.0	8.0	10.0	16.0
-	HPC711.32.----							

**Order codes:** Please combine the coupling part number in the above table with the bore reference in the standard bores table (see pages 3.46 & 3.47).

Please identify both bores to complete the part number eg. HPC710.13. 14 22

Part Number ØB1 ØB2

## DISCOUNTS

1 - 19	20-39	40-59	60-99	100 +
List Price	-15%	-20%	-25%	-30%

PART NUMBER		Set Screw	Cap Screw	② Angular	② Parallel	③ Peak	PRICE EACH 1-19
Set Screw Hubs	Clamp Hubs			Offset Deg.	Offset mm	Torque Nm	
HPC710.13.----	-	M3	M2	5	0.17	0.51	£32.27
-	HPC711.13.----						£37.20
HPC710.16.----	-	M4	M2.5	5	0.2	0.91	£33.44
-	HPC711.16.----						£38.09
HPC710.19.----	-	M4	M2.5	7	0.25	1.3	£35.99
-	HPC711.19.----						£39.01
HPC710.25.----	-	M5	M3	7	0.38	2.5	£47.50
-	HPC711.25.----						£52.16
HPC710.32.----	-	M6	M4	7	0.5	4.0	£65.08
-	HPC711.32.----						£70.73

- ① Length of supported bore.
- ② Max. compensation values are mutually exclusive.
- ③ **Peak torque.** Select a size where Peak Torque exceeds the application torque x service factor.

**6-beam couplings**

If either shaft extends beneath the beams, the area outlined in red must be relieved to provide clearance under the flexure (see page 3.47). Please contact our sales department for a quotation.