

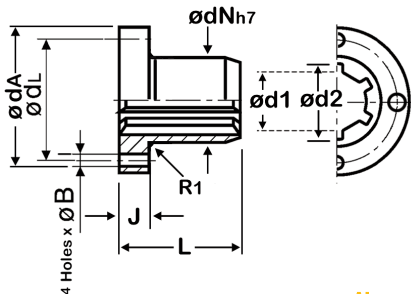
Material

Steel EN8 (C45)
Flanged Steel with holes

Linear Motion

Splined Sleeves Precision Range

a* : Number of Keys



Also available in Stainless Steel

DISCOUNTS	1 - 5	6-19	20-39	40-59	60-99	100-499	500-999	1000+
	List Price	-10%	-20%	-30%	-35%	-40%	-50%	-60%

PART NUMBER	a* x d1	x d2	odA	(h7) odN	L	J	odL	4xodB	PRICE EACH 1-5
HPC294-011-703	6 x 11	x14	41	22	30	8	30	4.3	£134.51
HPC294-013-703	6 x 13	x16	43	24	30	8	32	4.3	£156.28
HPC294-016-704	6 x 16	x20	52	28	40	9	38	5.3	£179.66
HPC294-018-705	6 x 18	x22	60	32	50	9	46	5.3	£196.89
HPC294-021-705	6 x 21	x25	62	34	50	10	48	6.4	£212.33
HPC294-023-706	6 x 23	x28	68	40	60	10	54	6.4	£245.00
HPC294-026-706	6 x 26	x32	70	42	60	10	56	6.4	£267.69
HPC294-028-707	6 x 28	x34	78	48	70	12	63	8.4	£306.27
HPC294-029-707	6 x 29.7	x34.93	80	50	70	12	65	8.4	£378.86
HPC294-032-707	8 x 32	x38	80	50	70	12	65	8.4	£344.82
HPC294-036-708	8 x 36	x42	93	58	80	14	73	8.4	£381.14
HPC294-042-709	8 x 42	x48	95	60	80	16	75	10.5	£415.16
HPC294-046-710	8 x 46	x54	99	65	80	16	80	10.5	£444.66

