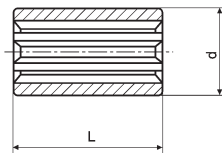
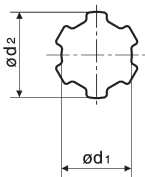


## Material

Steel 1.0727 (45 S 20 K)  
Round Steel

# Linear Motion

## Splined Sleeves Precision Range



$a^*$  : Number of Keys

DISCOUNTS	1 - 5	6-19	20-39	40-59	60-99	100-499	500-999	1000+
	List Price		-10%	-20%	-30%	-35%	-40%	-50%

PART NUMBER	$a^* \times d_1$	$x \ d_2$	L	d	PRICE EACH 1-5
HPC294-011-004	6 x 11	x14	40	30	£29.69
HPC294-013-004	6 x 13	x16	40	35	£31.05
HPC294-016-004	6 x 16	x20	40	40	£32.88
HPC294-018-004	6 x 18	x22	40	42	£34.91
HPC294-021-004	6 x 21	x25	40	45	£36.05
HPC294-021-006	6 x 21	x25	60	38	£47.61
HPC294-023-006	6 x 23	x28	60	50	£46.04
HPC294-026-006	6 x 26	x32	60	60	£53.45
HPC294-028-006	6 x 28	x34	60	70	£62.14
HPC294-029-006	6 x 29.7	x34.93	60	75	£84.59
HPC294-029-008	6 x 29.7	x34.93	80	50.8	£109.31
HPC294-032-006	8 x 32	x38	60	75	£67.58
HPC294-036-006	8 x 36	x42	60	80	£85.50
HPC294-042-006	8 x 42	x48	60	90	£89.58
HPC294-046-006	8 x 46	x54	60	90	£107.28

*'Never Knowingly Outpriced'*

