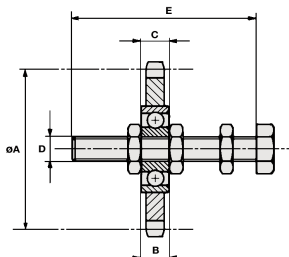
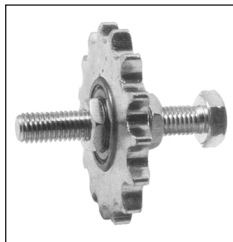


Sprocket Wheel Set

Materials

Type KS Simplex

STD : Steel

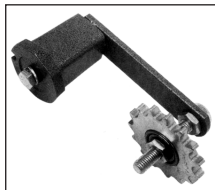


The Sprocket Wheel Set is equipped with a high quality ball bearing. The bolt (with nuts) and the sprocket wheel are galvanised.

NOTE:

The sprocket must be mounted on the same side as the tension mounting bracket, as shown in the picture.

Sprockets & Chains KS



Part Number	Art. No.	suitable for
KS3/8x7/32-10	551 020 00	TE 3 - TE 4
KS1/2x5/16-10	551 030 00	TE 3 - TE 4
KS5/8x3/8-12	551 050 00	TE 5
KS3/4x7/16-12	551 070 00	TE 5
KS3/4x7/16-20	551 080 00	TE 6
KS1x17.02-20	551 090 00	TE 6
KS1 1/4x3/4-20	551 100 00	TE 7
KS1 1/2x1-20	551 110 00	TE 7

DISCOUNTS

1 - 5	List Price
6 - 19	- 12%
20 - 39	- 25%
40 - 59	- 33%
60 - 99	- 37%
100 - 200	- 42%

PART NUMBER	ART No.	No. of TEETH	ØA	B	C	D	E	ISO #	WEIGHT (kg)	PRICE EACH 1 - 5
KS3/8x7/32-10	551 020 00	15	45.81	9	5.7	M10	60	ISO-06B	0.150	£23.09
KS1/2x5/16-10	551 030 00	15	61.08	9	7.5	M10	60	ISO-08B	0.200	£24.22
KS5/8x3/8-12	551 050 00	15	76.36	12	9.1	M12	80	ISO-10B	0.370	£31.32
KS3/4x7/16-12	551 070 00	15	91.63	12	11.5	M12	80	ISO-12B	0.600	£37.41
KS3/4x7/16-20	551 080 00	15	91.63	15	11.5	M20	120	ISO-12B	0.900	£54.54
KS1x17.02-20	551 090 00	13	106.14	15	16.2	M20	120	ISO-16B	1.300	£63.01
KS1 1/4x3/4-20	551 100 00	13	132.67	15	18.5	M20	140	ISO-20B	2.050	£90.22
KS1 1/2x1-20	551 110 00	11	135.23	15	24.1	M20	140	ISO-24B	2.400	£112.16

13.0



Unit 14, Foxwood Ind. Park, Foxwood Rd. Chesterfield, Derbyshire S41 9RN
Telephone +44(0)1246 268080 Fax +44(0)1246 260003