

Materials

STD : Steel

Universal Tensioner

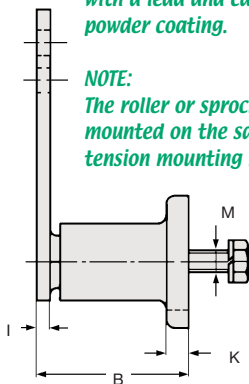
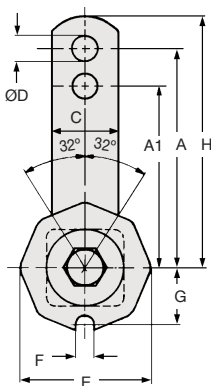
TE



For use in mechanical engineering and allied industries where possible corrosion is not permitted. Usually fitted as chain and belt tensioners with a single bolt they are simply fitted by friction hold in any position.

The RESATEC Universal Tension Type TE-1 is maintenance free and safe in operation. They can be supplied with a lead and cadmium-free powder coating.

Max. op. temp. 85° C



NOTE:

The roller or sprocket must be mounted on the same side as the tension mounting bracket.

DISCOUNTS

	List Price
1 - 5	
6 - 19	- 12%
20 - 39	- 25%
40 - 59	- 33%
60 - 99	- 37%
100 - 200	- 42%

PART NUMBER	A1	A	B	C	ØD	E	F	G	H	I	K	M	F in N 0-32	WEIGHT (kg)	PRICE EACH 1 - 5
TE2	60	80	52	20	8.5	38	8.0	17	90	5	7	6	0-90	0.250	£28.37
TE3	80	100	63	25	10.5	48	8.5	21	112.5	5	10	8	0-140	0.450	£33.56
TE4	80	100	78	30	10.5	59	8.5	25	115	6	12	10	0-320	0.700	£40.05
TE5	100	130	108	50	12.5	76	10.5	34	155	8	15	12	0-820	1.800	£62.02
TE6	140	175	140	60	20.5	97	12.5	43	205	10	17	16	0-1500	3.700	£105.97
TE7	175	220	198	70	20.5	112	12.5	50	255	12	12	20	0-2500	6.500	£164.32

Chain & Belts TE

12.144



Unit 14, Foxwood Ind. Park, Foxwood Rd. Chesterfield, Derbyshire S41 9RN
Telephone +44(0)1246 268080 Fax +44(0)1246 260003

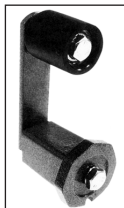
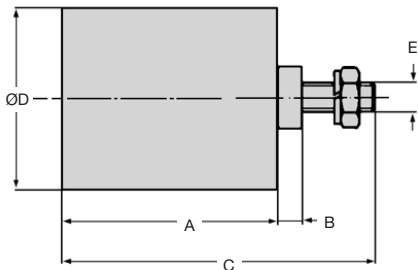


The Rollerset consists of the PA 6 roll with high quality ball bearings, galvanised bolt, nut and distance bushes.

The Belt tensioners are used for automatic and maintenance free tensioning of V-, flat- and tooth belts.

NOTE:

The roller must be mounted on the same side as the tension mounting bracket, as shown in the picture.



Part Number	Art. No.	suitable for
RE2	552 002 00	TE 2
RE3/4	552 003 00	TE 3 - TE 4
RE5	552 005 00	TE 5
RE6	552 006 00	TE 6 - TE 7
RE7	552 007 00	TE 7

DISCOUNTS

Quantity	List Price
1 - 5	-
6 - 19	- 12%
20 - 39	- 25%
40 - 59	- 33%
60 - 99	- 37%
100 - 200	- 42%

PART NUMBER	ART No.	A	B	C	D	E	WEIGHT (kg)	PRICE EACH 1 - 5
RE2	550 002 00	35	3	51	30	M8	0.075	£26.30
RE3/4	550 003 00	45	6	67	40	M10	0.170	£31.58
RE5	550 005 00	60	7.5	89	60	M12	0.395	£51.45
RE6	550 006 00	90	9	127	80	M20	1.200	£90.78
RE7	550 007 00	135	7	167	80	M20	1.700	£149.32

