

# Gearboxes

Output Torque Range  
59Nm to 420Nm

Ratio  
2:1 - 7:1

## Parallel Spur Gear Reducers

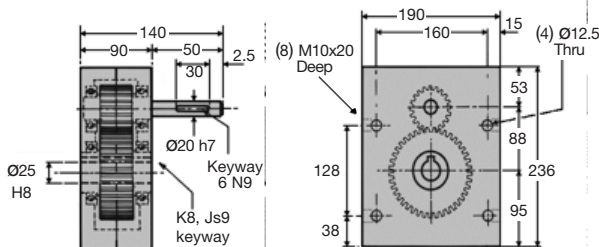
**HPCFF40**

HPCFF40



PARALLEL SPUR GEAR REDUCERS

<b>WEIGHT</b>	13.5 Kg
<b>BACKLASH (approx.)</b>	1° approx
<b>HOURS LIFE</b>	12000 hr
<b>MAX INPUT SPEED</b>	2000 rpm
<b>MATERIAL:</b>	
<b>CASE MAT'L</b>	Aluminium HE30TF
<b>GEAR MAT'L</b>	817M40 (EN24) & 655M13 Case/HD (EN36)
<b>GREASED FOR LIFE</b>	Shell Gadus



N.m.	RPM Input	Reduction ratio					
		2:1	3:1	4:1	5:1	6:1	7:1
Output Torque	2000	83	83	76	70	61	59
	1000	90	90	82	76	66	64
	500	103	102	95	87	76	73
	200	120	120	110	102	89	86
	100	138	135	126	116	101	98
	50	156	155	146	136	117	113
	10	210	210	196	180	158	152

DISCOUNTS	
1 - 5	List Price
6 - 19	-5%
20 - 49	-10%
50 - 99	-15%
100 +	-20%

PART NUMBER	Ratio	% Eff. @ 1000 rpm	Max Input Speed	Max Output Speed	Nm Output @ 1000 rpm	PRICE EACH 1-5
HPCFF40-2	2:1	93	2000	1000	90	£523.19
HPCFF40-3	3:1	93	2000	666	90	£523.19
HPCFF40-4	4:1	93	2000	500	82	£523.19
HPCFF40-5	5:1	93	2000	400	76	£523.19
HPCFF40-6	6:1	93	2000	333	66	£523.19
HPCFF40-7	7:1	93	2000	285	64	£523.19
HPCFF40-XH	Hardened Gears 2:1 to 7:1 multiply torque figures by 2					£685.59

### Other Info.

Testing in your application is necessary.

You will need to assess duty, cycles and confirm gearbox suitability with your own calculations.

Torque figures are to be used for guidance only.

**1.56**



Unit 14, Foxwood Industrial Park, Foxwood Rd. Chesterfield, Derbyshire S41 9RN

Telephone +44(0)1246 268080 Fax +44(0)1246 260003