

Gearboxes

Output Torque Range
1.25Nm to 5Nm

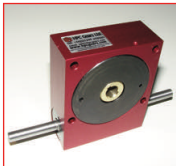
Ratio
5:1 - 120:1

Worm / Wheel Reduction

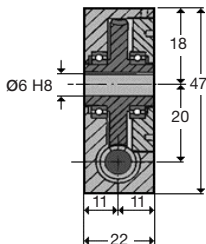
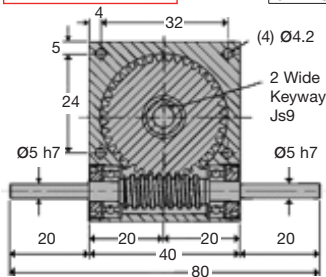
Shaft Input

HPCP20

PRECISION WORM GEAR REDUCERS HPCP20



WEIGHT	0.18 Kg
BACKLASH	0° 30' approx
HOURS LIFE	12000 hr
MAX INPUT SPEED	6000 rpm
MATERIAL:	
CASE MAT'L	Aluminium HE30TF
WORM MAT'L	817M40(EN24)
WHEEL MAT'L	Alum. Bronze (AB2)
GREASED FOR LIFE	Shell Gadus



N.m.	RPM Input	Reduction ratio						
		10:1	12:1	15:1	20:1	30:1	60:1	120:1
Output Torque	3000	1.4	1.5	1.6	1.7	1.9	2.1	1.25
	2000	1.7	1.7	1.8	1.8	2.1	2.4	1.42
	1000	2.1	2.3	2.3	2.5	2.7	2.9	1.70
	500	2.7	2.7	2.8	2.9	3.2	3.5	1.94
	200	3.4	3.5	3.5	3.7	3.9	4.1	2.27
	100	3.9	3.9	4.1	4.2	4.3	4.5	2.55
	50	4.4	4.5	4.5	4.6	4.7	4.8	2.72
10	4.8	4.8	4.9	4.9	5.0	5.0	2.72	

DISCOUNTS	
1 - 5	List Price
6 - 19	-5%
20 - 49	-10%
50 - 99	-15%
100 +	-20%

PART NUMBER	Ratio	Max Input Speed	Max Output Speed	% Effi. at 1000 Rpm	Backdrive	PRICE EACH 1-5
HPCP20-10	10:1	6000	600	86	YES	£123.50
HPCP20-12	12:1	6000	500	85	YES	£123.50
HPCP20-15	15:1	6000	400	84	YES	£123.50
HPCP20-20	20:1	6000	300	78	YES	£123.50
HPCP20-30	30:1	6000	200	71	YES/NO	£123.50
HPCP20-60	60:1	6000	100	60	NO	£123.50
HPCP20-S	5:1-120:1 SPECIAL RATIO					£157.29
HPCP20-A	SPECIAL MINIMUM BACKLASH 0° 8' OF ARC					£210.74

Output Shafts: HPCP20-X (Single), HPCP20-DX (Double): See page 1.23.

Testing in your application is necessary. You will need to assess duty, cycles and confirm gearbox suitability with your own calculations. Torque figures are to be used for guidance only.

1.4



Unit 14, Foxwood Industrial Park, Foxwood Rd. Chesterfield, Derbyshire S41 9RN

Telephone +44(0)1246 268080 Fax +44(0)1246 260003