

Gearboxes

Output Torque Range
0.94Nm to 3.75Nm

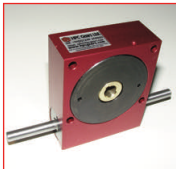
Ratio
6.66:1 - 80:1

Worm / Wheel Reduction

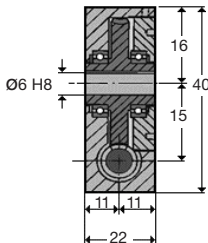
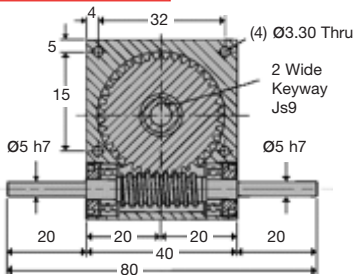
Shaft Input

HPCP15

PRECISION WORM GEAR REDUCERS HPCP15



WEIGHT	0.15 Kg
BACKLASH	0° 30' approx
HOURS LIFE	12000 hr
MAX INPUT SPEED	6000 rpm
MATERIAL:	
CASE MAT'L	Aluminium HE30TF
WORM MAT'L	817M40(EN24)
WHEEL MAT'L	Alum. Bronze (AB2)
GREASED FOR LIFE	Shell Gadus



N.m.	RPM Input	Reduction ratio						
		6.66:1	8:1	10:1	13.33:1	20:1	40:1	80:1
Output Torque	3000	1.05	1.13	1.20	1.28	1.43	1.58	0.94
	2000	1.28	1.28	1.35	1.35	1.58	1.80	1.07
	1000	1.58	1.73	1.73	1.88	2.03	2.18	1.28
	500	2.03	2.03	2.10	2.18	2.40	2.63	1.46
	200	2.55	2.63	2.63	2.78	2.93	3.08	1.70
	100	2.93	2.93	3.08	3.15	3.23	3.38	1.91
	50	3.30	3.38	3.38	3.45	3.53	3.60	2.04
10	3.60	3.63	3.68	3.68	3.75	3.75	2.04	

DISCOUNTS	
1 - 5	List Price
6 - 19	-5%
20 - 49	-10%
50 - 99	-15%
100 +	-20%

PART NUMBER	Ratio	Max Input Speed	Max Output Speed	% Eff. at 1000 Rpm	Backdrive	PRICE EACH 1-5
HPCP15-6	6.66:1	6000	900	86	Please Consult Technical	£111.26
HPCP15-8	8:1	6000	750	85		£111.26
HPCP15-10	10:1	6000	600	84		£111.26
HPCP15-13	13.33:1	6000	450	78		£111.26
HPCP15-20	20:1	6000	300	71		£111.26
HPCP15-40	40:1	6000	150	60		£111.26
HPCP15-80	80:1	6000	75	32		£111.26

Output Shafts: HPCP20-X (Single), HPCP20-DX (Double): See page 1.23.

Testing in your application is necessary. You will need to assess duty, cycles and confirm gearbox suitability with your own calculations. Torque figures are to be used for guidance only.

1.2



Unit 14, Foxwood Industrial Park, Foxwood Rd. Chesterfield, Derbyshire S41 9RN

Telephone +44(0)1246 268080 Fax +44(0)1246 260003